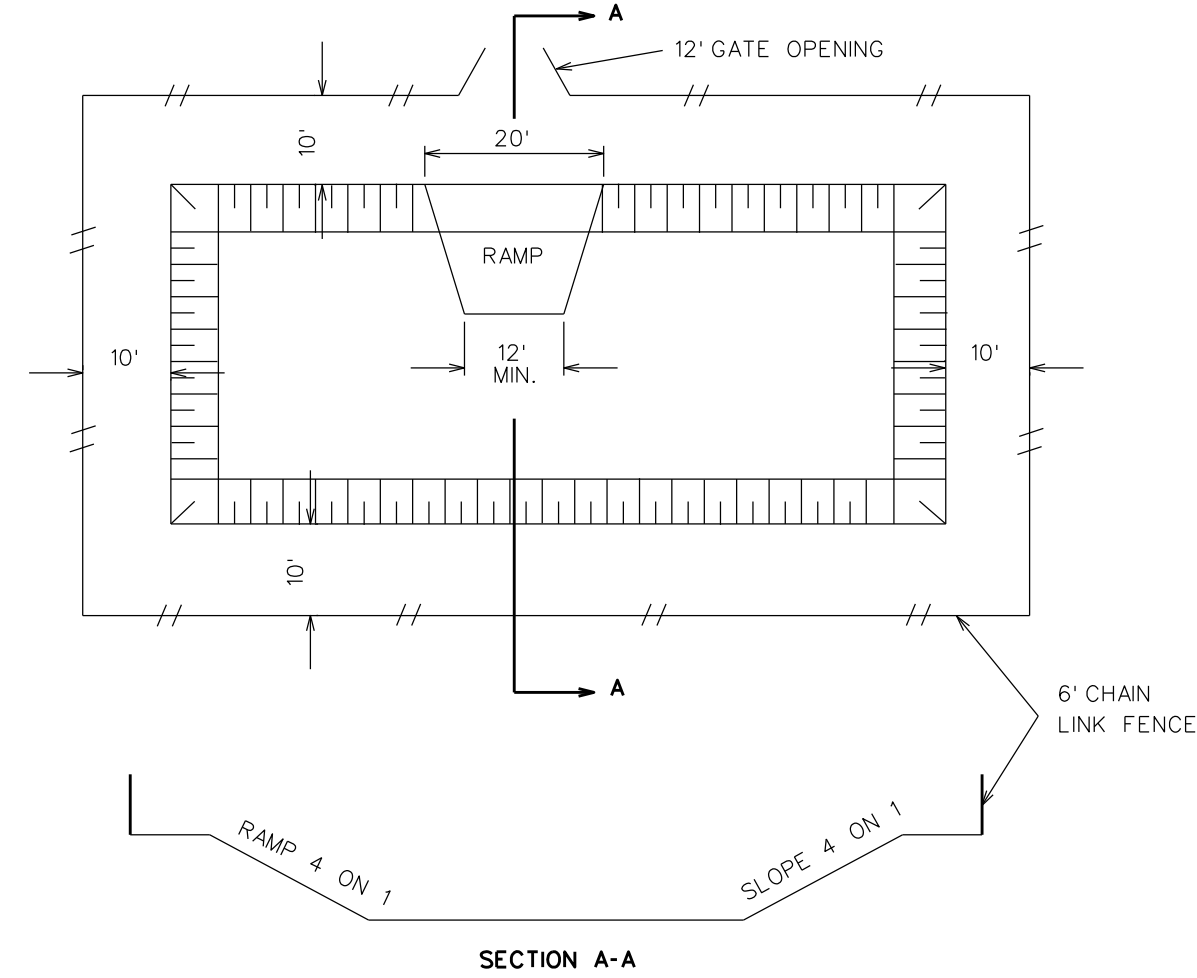


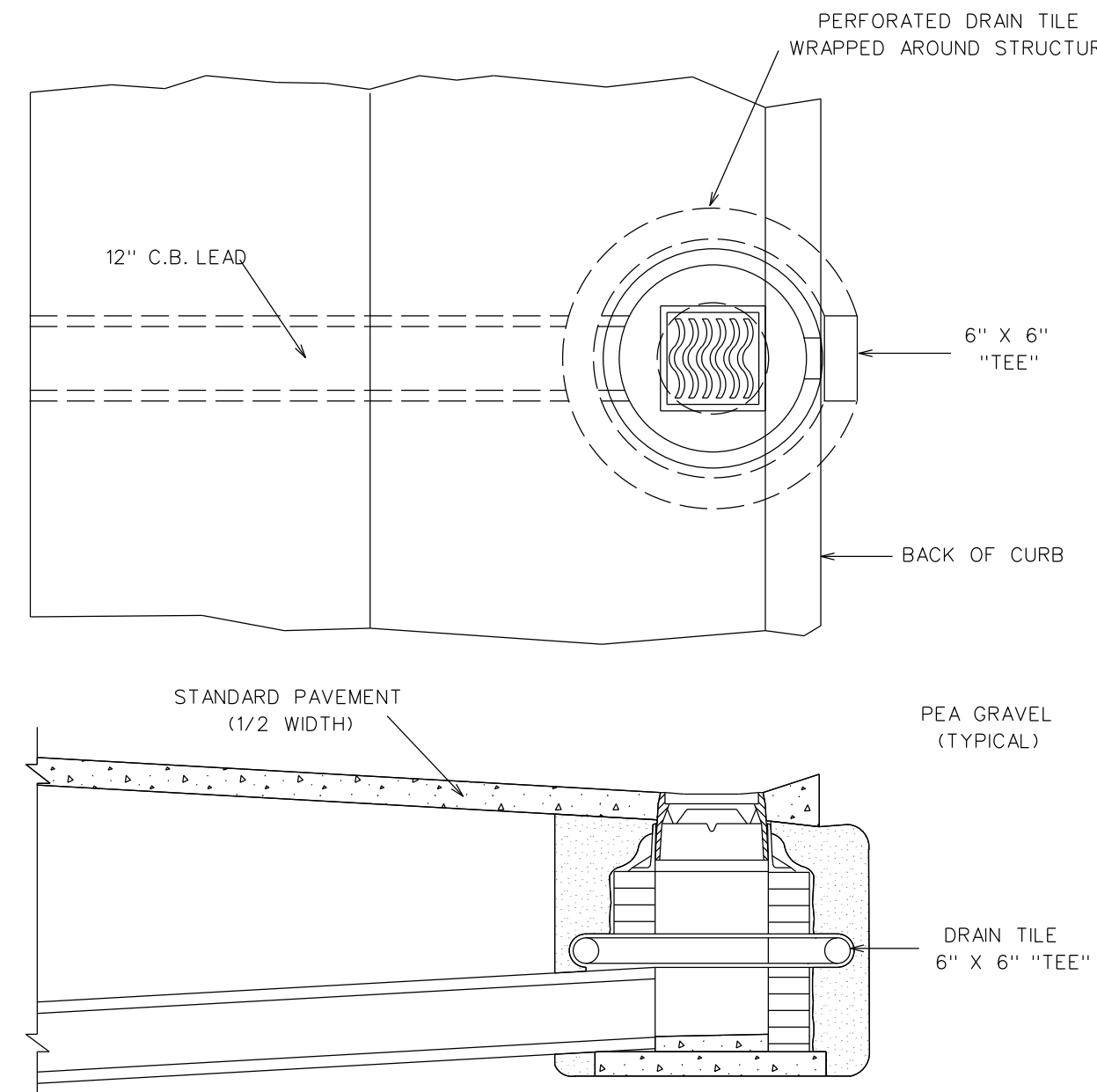
SDSTM013



- NOTES:**
- OVERFLOW PIPE TO BE PROVIDED AS CALLED FOR ON PLAN.
 - ENTIRE BASIN WITHIN FENCING TO BE TOPSOILED, SEEDED AND MULCHED OR SODDED WITH CLASS "B" SOD.
 - CONTRACTOR SHALL BE RESPONSIBLE FOR DEWATERING OF THE BASIN UNTIL BASIN IS ACCEPTED BY THE CITY.
 - ALL INLET AND OUTLET PIPES TO HAVE BAR SCREENS AND GROUTED RIP-RAP AS REQUIRED, ALL FLAP GATES INSIDE FENCE.
 - ALL GATES CONSTRUCTED DIRECTLY IN FRONT OF A PAVED ROAD-WAY ARE TO HAVE A "ROAD ENDS" SIGN FASTENED SECURELY TO GATE.
 - ELECTRICAL SERVICE TO BE PLACED INSIDE FENCING WHENEVER POSSIBLE.
 - CITY WILL PROVIDE NECESSARY PADLOCKS UPON COMPLETION & ACCEPTANCE OF THE BASIN

CITY OF STERLING HEIGHTS STANDARD DETAILS	RETENTION BASIN	DATE: 02/03/70	GLB
		REVISED: 1977,77,79,80	

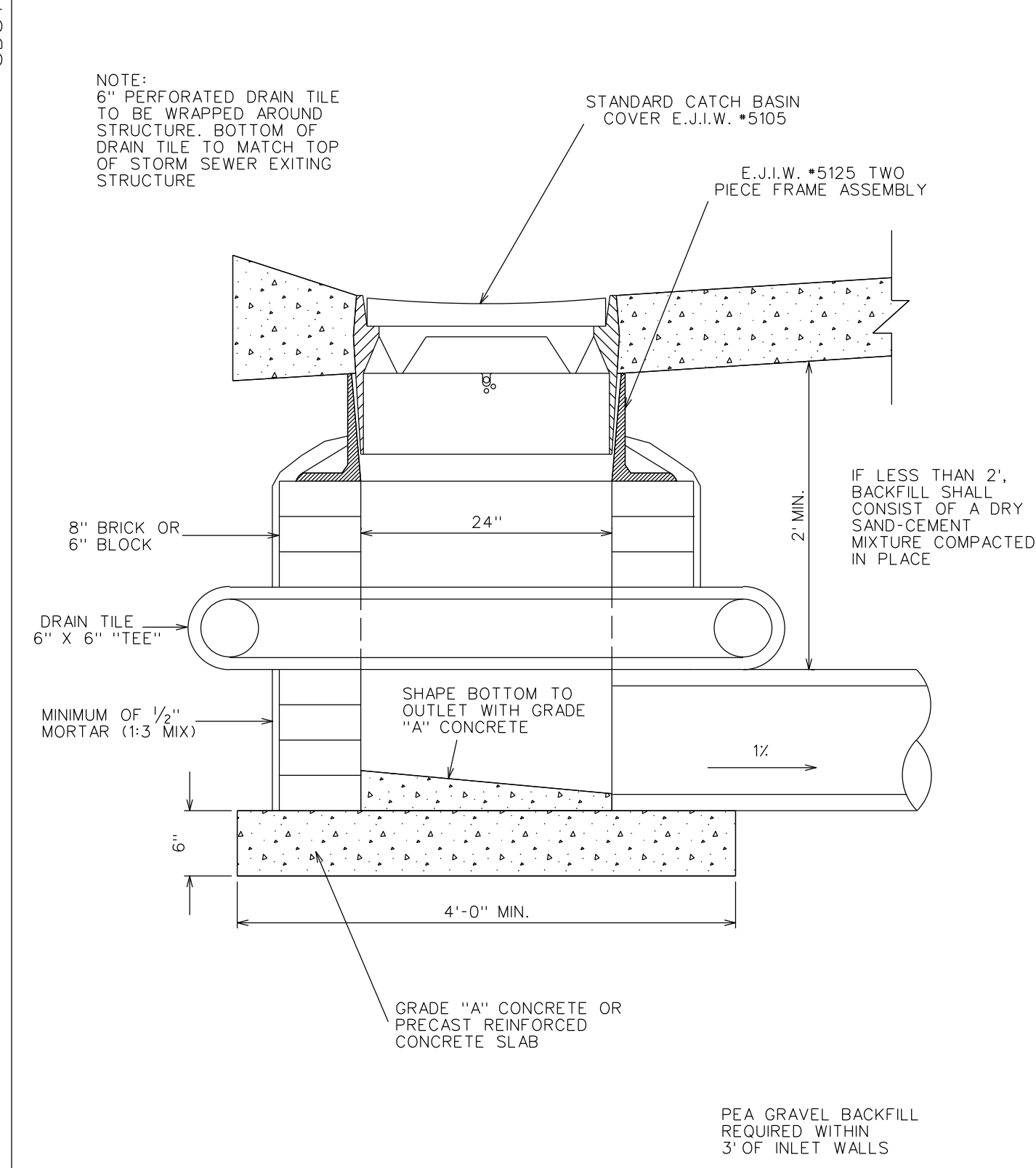
SDSTM014



- NOTES:**
- BOTTOM OF 6" DRAIN TILE TO MATCH TOP OF HIGHEST STORM SEWER PIPE ENTERING/EXITING STRUCTURE.
 - THIS DETAIL IS TYPICAL FOR ALL CATCH BASINS AND INLETS REQUIRING DRAIN TILE.
 - DRAIN TILE TO BE CORRUGATED PLASTIC TUBING, PVC TUBING MEETING ASTM F800 REQUIREMENTS OR BE TUBING MEETING AASHTO M 252 REQUIREMENTS WITH FOUR ROWS OF 3/16" DIAMETER PERFORATIONS.

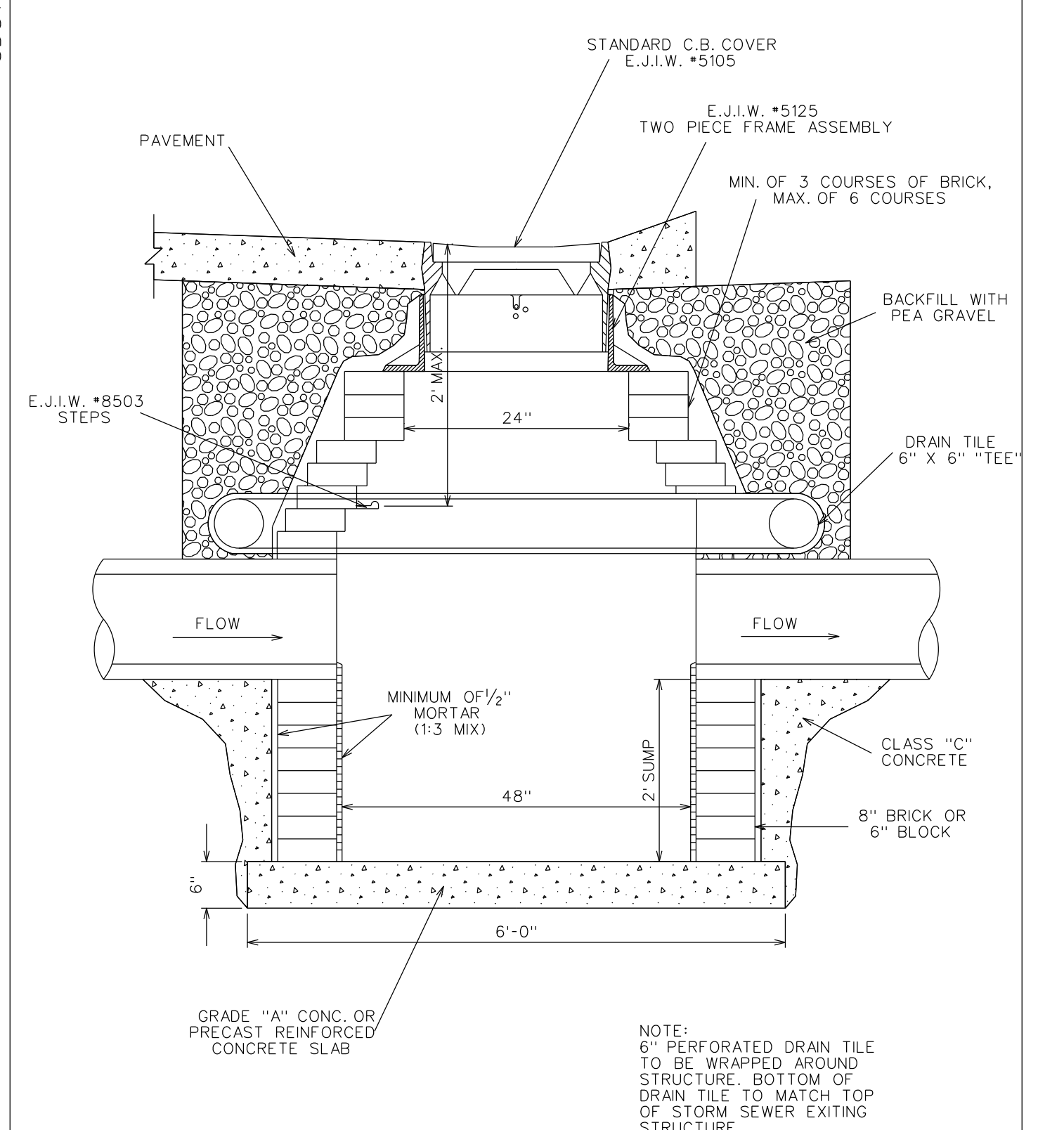
CITY OF STERLING HEIGHTS STANDARD DETAILS	EDGE DRAINS	DATE: 02/18/70	GLB
		REVISED: 1978,79,88	

SDSTM017



CITY OF STERLING HEIGHTS STANDARD DETAILS	STANDARD INLET BASIN	DATE: 01/16/70	GLB
		REVISED: 1978,79,80,88	

SDSTM012



CITY OF STERLING HEIGHTS STANDARD DETAILS	PAVEMENT CATCH BASIN	DATE: 01/19/70	GLB
		REVISED: 1977,78,79,80,88	

SDSTM007

MANHOLE MATERIALS

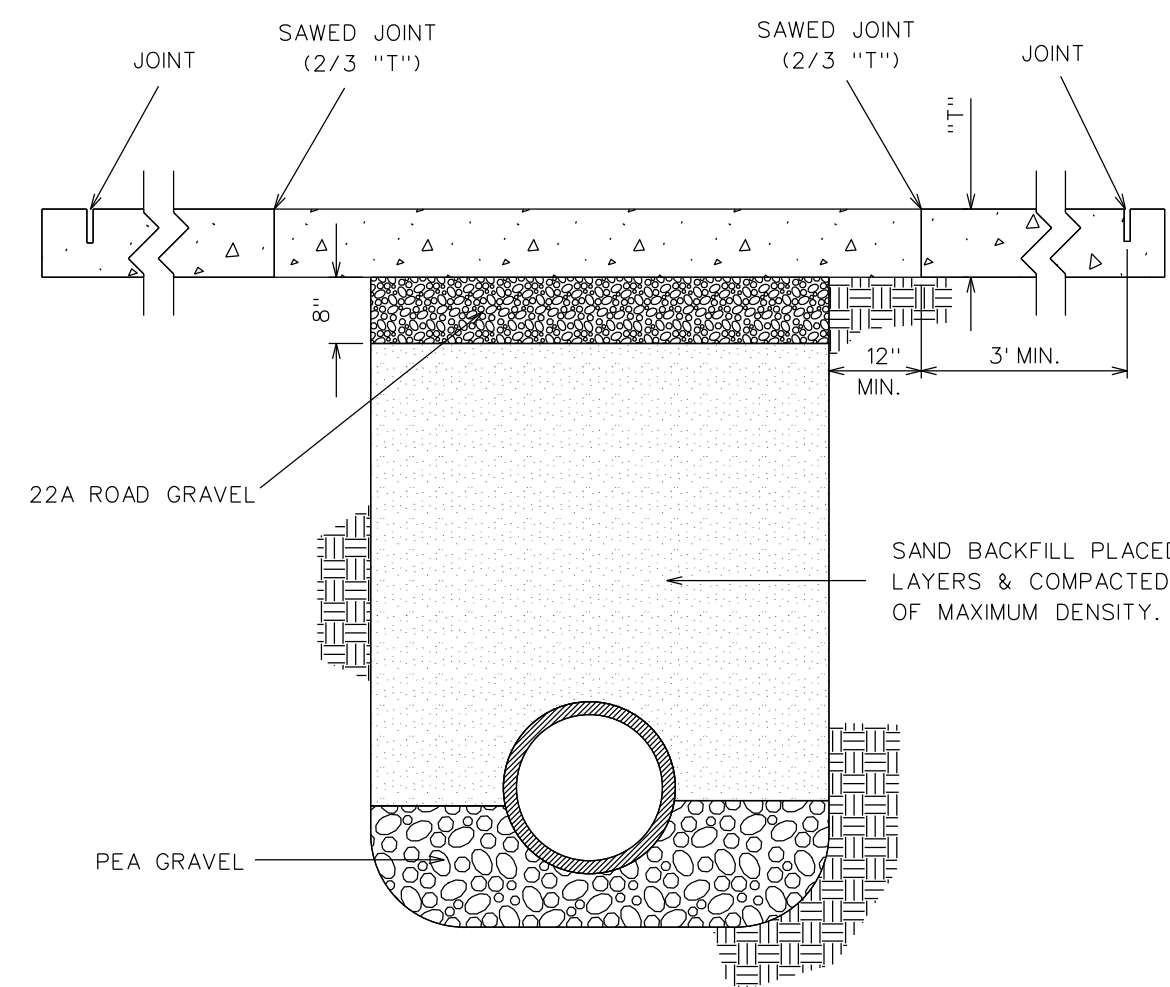
MATERIAL	DEPTH	THICKNESS
BRICK	0'-11'	8"
	11'-16'	12"
BLOCK	OVER 16'	16"
	OVER 16'	12"

TRENCH WIDTH REQUIREMENTS

PIPE SIZE	TRENCH WIDTH
6" TO 12"	30" MAXIMUM
15" TO 30"	OUTSIDE DIAMETER + 12"
36" TO 60"	OUTSIDE DIAMETER + 18"
OVER 60"	OUTSIDE DIAMETER + 24"

CITY OF STERLING HEIGHTS STANDARD DETAILS	MANHOLE MATERIALS & TRENCH WIDTH	DATE: 06/30/70	GLB
		REVISED:	

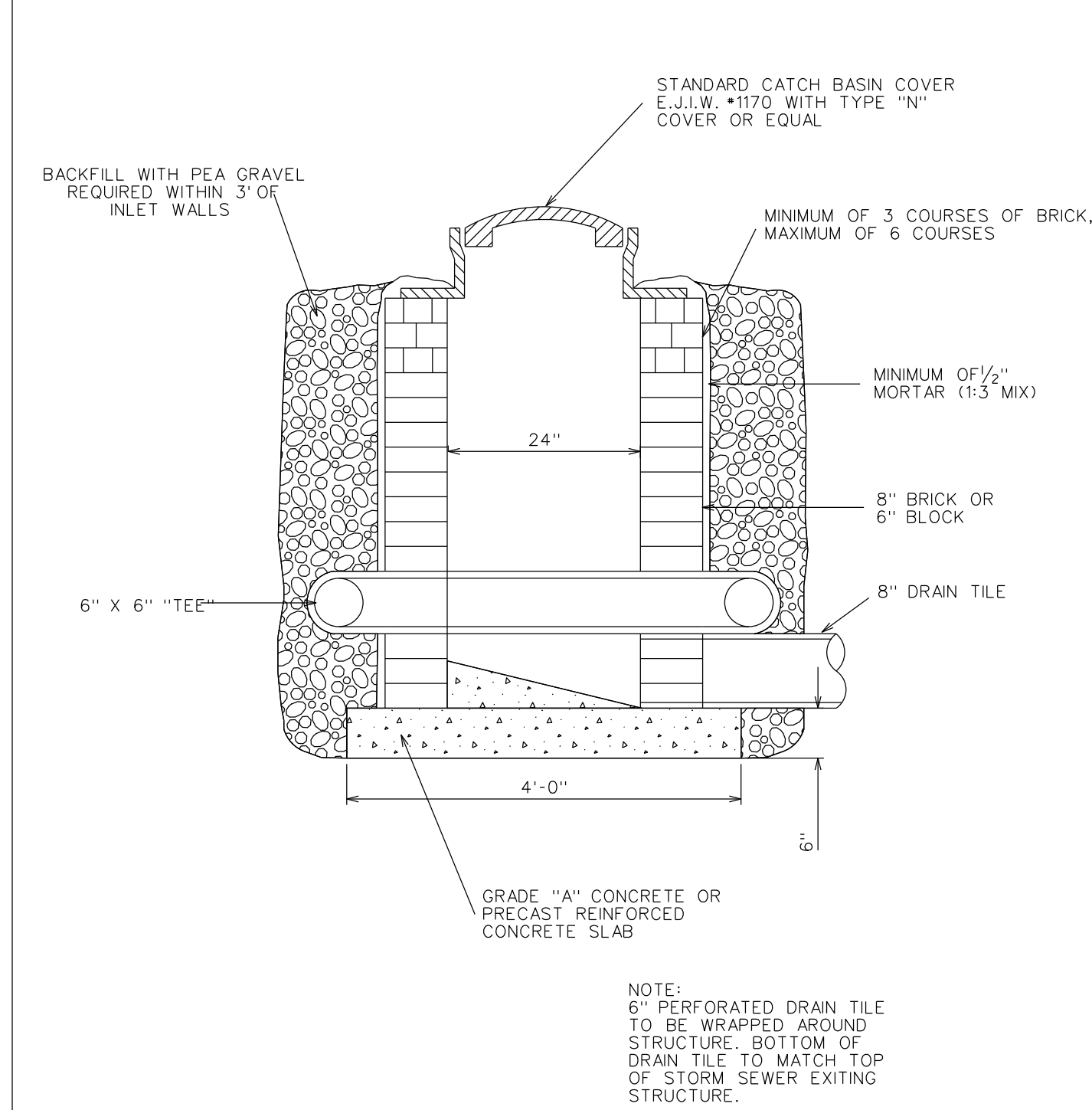
SDSAN500



- NOTES:**
- WHERE PAVEMENT REPLACEMENT DOES NOT IMMEDIATELY FOLLOW BACKFILL OPERATION, A TEMPORARY SURFACING SHALL BE PLACED AS DIRECTED BY THE ENGINEER.
 - ASPHALT FOR REPLACEMENT SHALL MEET CURRENT M.D.O.T. SPECS. FOR BITUMINOUS AGGREGATE SURFACE COURSE 4.11.
 - CONCRETE FOR REPLACEMENT SHALL MEET CURRENT M.D.O.T. SPECS. FOR HIGH EARLY STRENGTH CONCRETE.

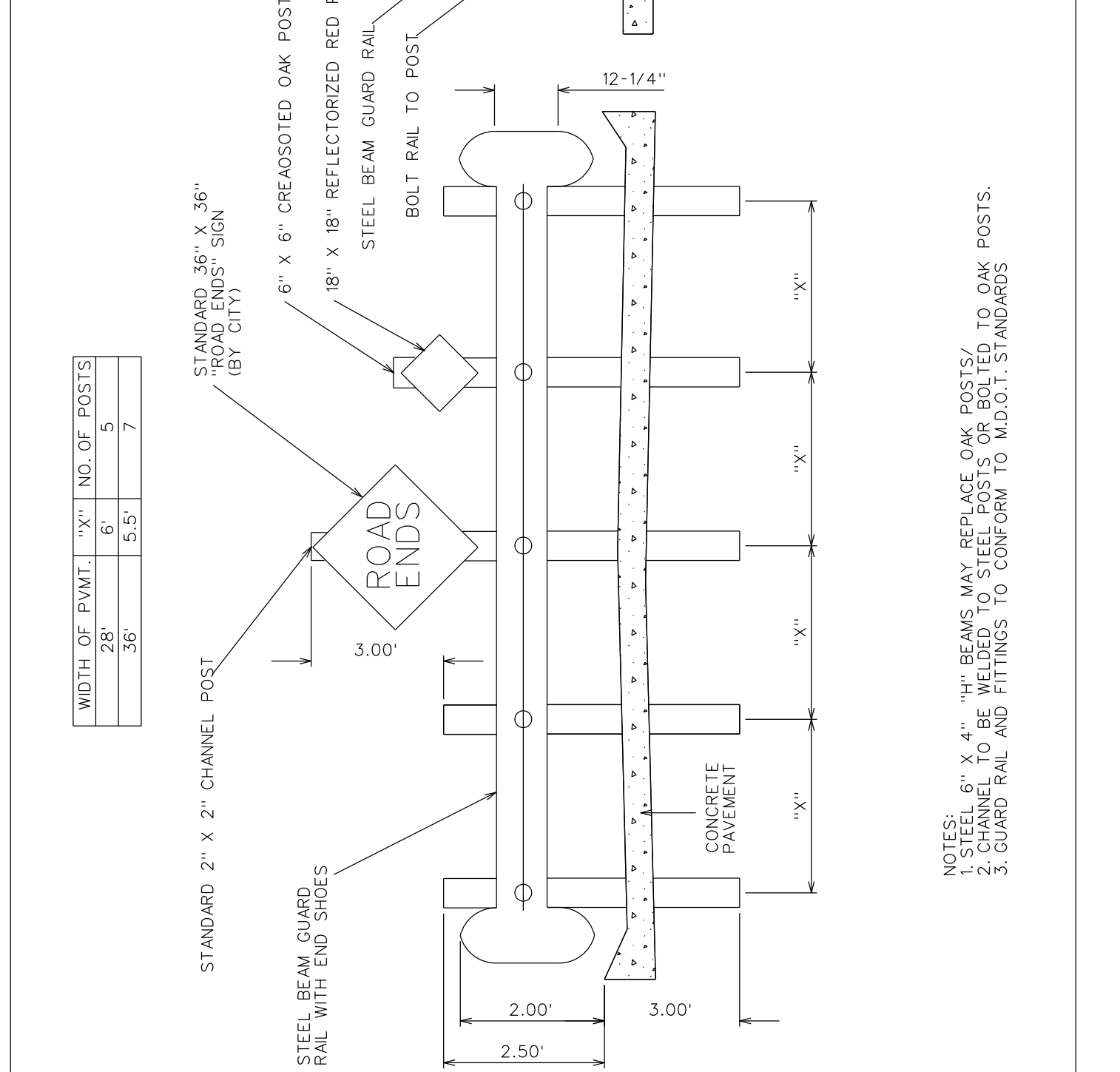
CITY OF STERLING HEIGHTS STANDARD DETAILS	PAVEMENT REPLACEMENT	DATE: 02/17/70	GLB
		REVISED:	

SDSTM015



CITY OF STERLING HEIGHTS STANDARD DETAILS	24" REAR YARD INLET	DATE: 01/12/81	DRJ
		REVISED: 03/11/88	

SDPAY010



CITY OF STERLING HEIGHTS STANDARD DETAILS	DEAD END BARRICADE	DATE: 01/20/70	GLB
		REVISED: 02/28/77	

PROJECT INFORMATION LOCATION: CITY OF STERLING HEIGHTS STATION: 40555 UTICA ROAD C.P. NO.: P.O. BOX 8009 FILENAME: F:\DRAW\DETAILS\USHT05.DGN	REVISIONS DATE: _____ DESCRIPTION: _____ DATE: _____ DESCRIPTION: _____ DATE: _____ DESCRIPTION: _____	
	SCALE: 1" = 50' DRAWN: DWM CHECKED: GLB APPROVED: TRD CITY ENGINEER: _____	DATE: NOTED FIELD BOOK: PAGE:
	CITY OF STERLING HEIGHTS 40555 UTICA ROAD P.O. BOX 8009 STERLING HEIGHTS, MI 48311-8009 (586) 446-2489	STANDARD DETAILS STORM 2 OF 2